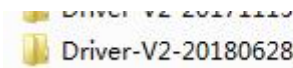


Printer Configuration demo manual

Printer setting

1. Connect printer and PC with serial cable or USB cable provided by MASUNG, then power on the printer.

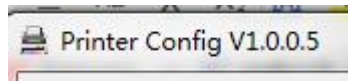
Notice: please install printer windows USB driver if user want to use printer USB port to adjust printer parameters setting.



(user can download this driver file from official website: www.masungtek.com)

2. Load thermal paper roll into printer correctly.
3. Open demo tool “Printer Config Demo V1.0.0.5” and run its

application demo



on PC.

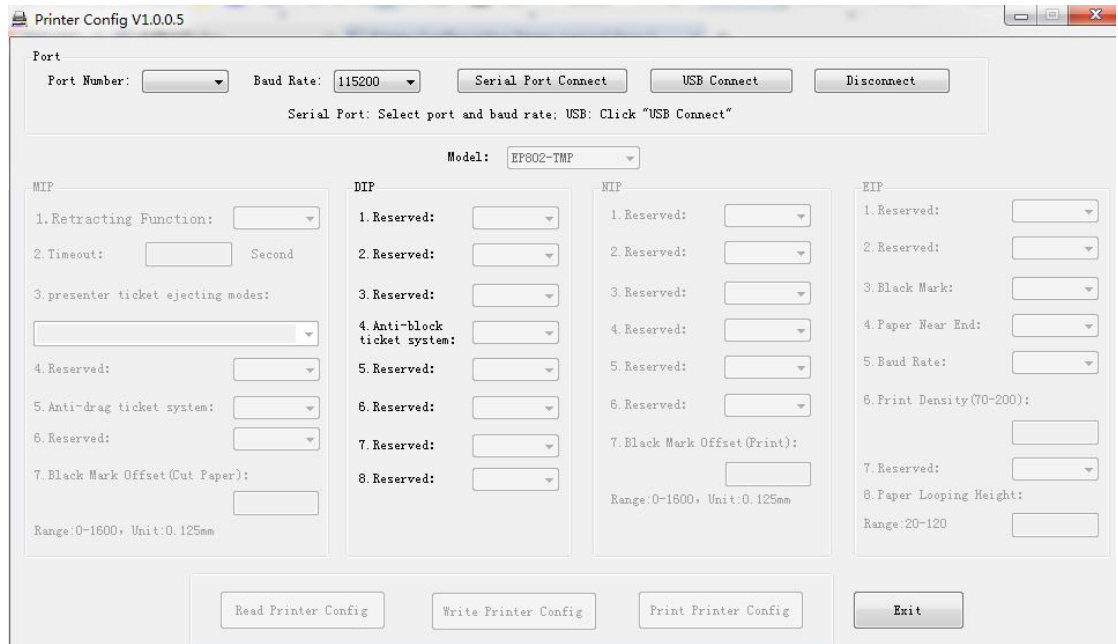
a. connection

- 1.just click [USB Connect] (if user used printer via USB port)

2. just click [Serial Port Connect] (if user used printer via serial port)

Notice: When use Serial port, please choose correct PC Port Number and printer default Baud Rate

Eg:



b. Choose correct printer model

EP802-TMP (printer with paper presenter & retractor)

EP802-TM (printer with “ anti-drag ticket system + anti-block ticket system)

c. Click [Read Printer Config] to get current printer default parameters.



d. User can change different setting, including:

Common settings : EP802-TMP/EP802-TM

1. different baud rate value : 9600/115200/38400/57600/19200
2. Blackmark function : enable/disable
3. Paper near end : enable/disable
4. Printing density value :

$70 < n < 102$

Density = 85%

$102 \leq n < 135$

Density = 100%

$135 \leq n < 170$

Density = 115%

$170 \leq n < 200$

Density = 130%

notice: 130% is one definition value stands for a density grade. it is not a input print density value.

5. blackmark offset value :0-1600

Specified setting: EP802-TMP only

6. retracting function : enable/disable
7. Times out : 1~60 seconds

(notice: this time setting is valid for retractor and presenter functions)

MIP

1. Retracting Function:

2. Timeout: Second

3. presenter ticket ejecting modes:

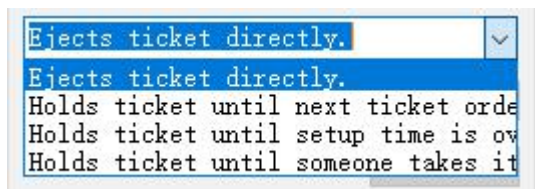
8. presenter ticket ejecting modes:

I.Ejects ticket directly

II.Holds ticket until next ticket order is executed

III.Holds ticket until setup time is over

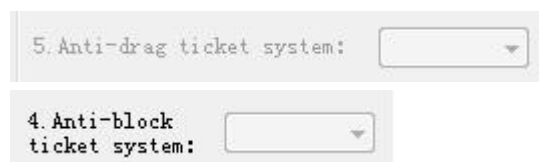
IV.Holds ticket until someone takes it away.



Notice:if you enable retractor, then presenter all modes are disable.

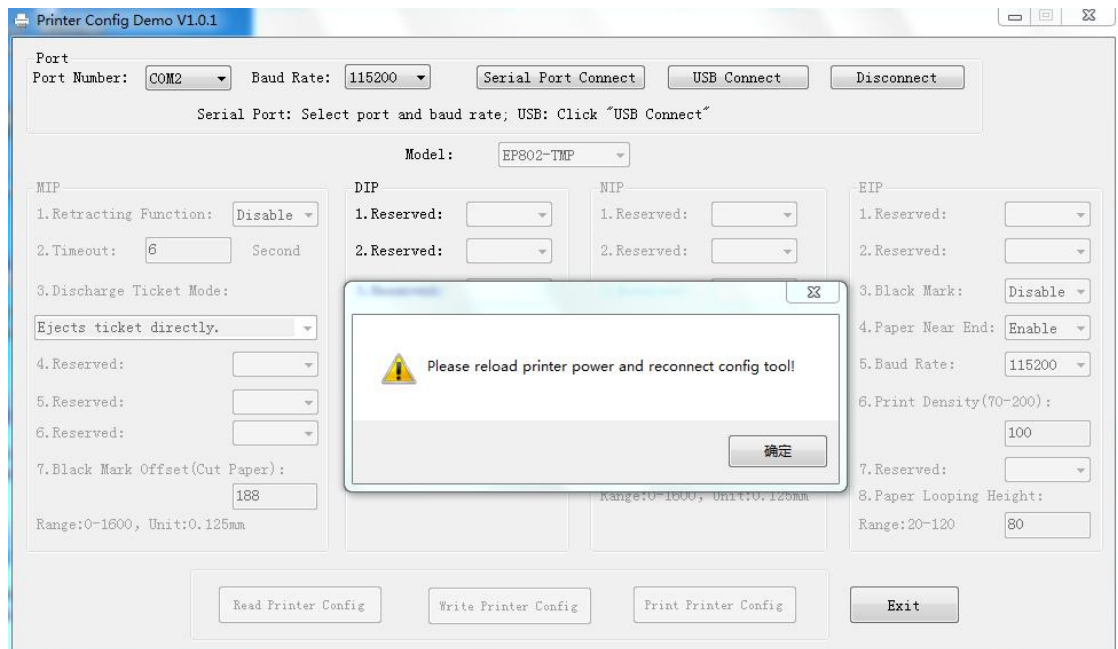
if you enable any one of modes of presenter, you must to disable retractor.

Specified settings: EP802-TM only

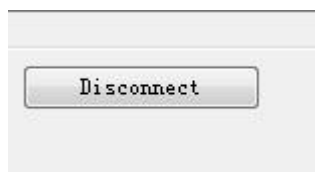


e. After changing different setting , please click [Write Printer Config] to activate your setting.

f . If the parameter has been set successfully. Then tool will pop a window to remind user to restart the printer. Please Click “OK” and reload printer power.



g. Disconnect the printer with PC



h. Connect the printer with PC again, click [Print Printer Config] to print a parameter information page, then user can check printer configuration was changed successfully or not.



Eg:

EP802-TMP Printer config as bellow:

Presenter unit retracting function: Disable

Timeout: 6 Second

Discharge ticket mode: Ejects ticket directly.

Black mark offset(cut paper): 188(unit: 0.125mm)

Black mark offset(print): 188(unit: 0.125mm)

Black mark: Disable

Paper near end: Enable

Baud rate: 9600

Print density: 100

Paper looping height: 80

EP802-TMP Printer config as bellow:

Presenter unit retracting function: Disable

Timeout: 6 Second

Discharge ticket mode: Ejects ticket directly.

Black mark offset(cut paper): 188(unit: 0.125mm)

Black mark offset(print): 188(unit: 0.125mm)

Black mark: Disable

Paper near end: Enable

Baud rate: 115200

Print density: 100

Paper looping height: 80